



PUERTO RICO **Heineken**[®] INTERNATIONAL REGATTA

Organizing Authority

Federación de Vela de Puerto Rico

THE YACHT CLUB AT PALMAS DEL MAR

HUMACAO, PUERTO RICO

MAY 24 - 27, 2013

SAILING INSTRUCTIONS

1. RULES

- 1.1 This Regatta will be governed by the rules as defined in The Racing Rules of Sailing (RRS). To the extent permitted by Part 7 of the RRS, specific provisions of the RRS may be modified, altered or made inoperative by the Notice of Race (NOR) or the Sailing Instructions (SI).
- 1.2 The regulations of the Caribbean Sailing Association (CSA), the regulations of the Caribbean Sailing Association (CSA), the CSA Minimum Safety Requirements, the International J-24 Class Association (IJCA) Rules as modified by the Caribbean J-24 Class Association and the IC-24 class Rules, except as modified, altered or made inoperative by the NOR or the SI, to the extent permitted by such class rules.
- 1.3 Total maximum crew weight listed on CSA Certificates will apply. In the J-24 Class, maximum crew weight is that allowed by the CSA rules.
- 1.4 Each boat shall carry its sail number on their mainsail and on all headsails whose LP exceeds 130% of "J". Yachts failing to comply may be penalized 20 % of its elapsed time for the race. This instruction will constitute prior warning, pursuant to appendix H4 of RRS.
- 1.5 If there is a conflict between languages the English text will take precedence.

2. ADVERTISING

- 2.1 ISAF regulation 20.4 applies. Boats may be required to display advertising chosen and supplied by the Organizing Authority (OA) in all or any of the races, if applicable.

3. NOTICE TO COMPETITORS

- 3.1 Notices to Competitors will be posted on the official notice board located in the Regatta offices at The Yacht Club, Palmas del Mar, main building premises.

4. CHANGES IN THE SAILING INSTRUCTIONS

- 4.1 Any changes to the Sailing Instructions will be posted before 0800 hours on the day they will take effect, except that any change to the schedule will be posted by 2000 hours on the day before it will take effect.

5. SIGNALS MADE ASHORE

- 5.1 Signals made ashore will be displayed on a flag staff in front of the Regatta offices area at The Yacht Club main building.
- 5.2 If the AP flag is displayed ashore, when it is dropped, no race will begin for at least 60 minutes.

6. SCHEDULE OF RACES

6.1 Saturday, May 25, 2013

- 6.1.1 Multiple Race Formats will take place with the warning signal for the first race scheduled for 1000 hours.
- 6.1.2 No warning signal will be displayed after 1600 hours.

6.2 Sunday, May 26, 2013

- 6.2.1 Multiple Race Formats will take place with the warning signal for the first race scheduled for 1000 hours.
- 6.2.2 No warning signal will be displayed after 1600 hours.

6.3 Monday, May 27, 2013

- 6.3.1 Multiple Race Formats will take place with the warning signal for the first race scheduled for 1000 hours.
- 6.3.2 No signal will be displayed after 1400 hours.

- 6.4 For the first race of each day the Race Committee will endeavor to start the classes in the following order: class F, class E, class A, class B, class C, class D, class G, class H.

7. CLASS FLAGS

- 7.1 The following Class Flags are designated for the following classes:

Class A	CSA Racing A	Yellow
Class B	CSA Racing B	Green
Class C	CSA Jib & Main	
Class D	PHRF Jib & Main	Purple
Class E	PHRF Cruising	Gray
Class F	Native Boats	Pink
Class G	J 24 One Design Class	Class Flag
Class H	IC 24 One Design Class	Class Flag

- 7.2 Except for One Design Classes, Class Flags will be distributed at the Skippers Meeting for each participating boat.
- 7.3 The decision as to which class a boat races in rests entirely with the Regatta Race Committee, whose decision will be final.
- 7.4 Jib & Main boats are allowed to use a “J” dimension pole, and shall not fly more than one (1) headsail at a time.
- 7.5 Except for One Design Classes, each boat shall carry the flag of its class assignment on the backstay, above the stern rail.

8. RACING AREA

- 8.1 Racing area
 - 8.1.1 Located approximately (2.0 Nm) two Nautical miles, 110° from the Palmas del Mar Marina entrance.
- 8.2 Attachment 1 shows the location of the racing area on the waters adjacent to the Palmas del Mar Marina Resort.

9. MARKS

- 9.1 Marks will be yellow and/or orange inflatable buoys.
- 9.2 The starting marks will be a Race Committee Signals Vessel, with a staff displaying an orange flag and an orange inflatable buoy.
- 9.3 The finishing marks will be a Race Committee boat, either a Race Committee Signals Vessel or a Race Committee Finish boat, with a staff displaying a blue flag and an orange inflatable buoy.

10. THE COURSES

- 10.1 Attachment 2 will describe the order in which all marks are to be passed and which side they are to be left on. The written descriptions shall prevail over the diagrams.
- 10.2 Except as described in 10.3 for the courses 1 through 10 all marks are to be left to Port.
- 10.3 For the courses 1 through 6 mark G are leeward marks in the form of a gate (marks S and P), boats shall pass through the gate between S and P. This gate may be replaced by a single mark, Mark G to be left to port. When there is a gate, boats shall sail between the gate marks from the direction of the previous mark and round either gate mark.
- 10.4 The course number designation for the course to be sailed by each class will be posted by the Race Committee Signals Vessel no later than four (4) minutes before each start for that class by displaying the designated numeral pennant.
- 10.5 Mark OS1 will be located approximately 3.21 Nm, 197° from Pta. Arenas, Vieques; (L 18° 03.925' N, Lo 065° 34.851' W; Approx.).

11. THE START

- 11.1 The starting line will be between a staff displaying an orange flag on the starboard end starting mark and the port end starting mark.
- 11.2 Orange Flag (1 min.). To alert boats that a race or sequence of races will start soon, the orange flag(s) on the staff(s) designating the starting line will be displayed (with one sound signal) for at least One minutes before a warning signal is displayed.
- 11.3 The orange flag(s) on the staff(s) designating the starting line will be removed (with no sound signal) when the race management team determines that it will not promptly (usually within 5 minutes of the prior start) make the warning signal for the next race in a sequence of races.
- 11.4 Boats whose warning signal has not been made shall avoid the starting area.
- 11.5 A boat starting later than 4 minutes after her starting signal will be scored Did Not Start (DNS). This changes RRS A4 and A5.

12. THE FINISH

- 12.1 The finishing line will be between a staff displaying an orange flag on the finishing mark at the starboard end and the port finishing mark.
- 12.2 Boats that have finished shall avoid the finishing area.

13. PENALTIES

- 13.1 Any boat retiring shall advise the Race Committee at the earliest opportunity. Failure to do so may, following a hearing, result in disqualification from the regatta or such other penalty, as the Jury deems equitable.
- 13.2 Except for breaches of Parts 1 and 2 of the RRS, the Jury may apply any penalty that they deem equitable. This changes RRS 64.1.
- 13.3 A boat that does not take a penalty in accordance with RRS 44 may accept a 30% penalty before the protest hearing provided there was no damage and the boat did not gain a significant advantage.
- 13.4 When a percentage penalty is imposed, it shall be calculated as the percentage of the number of entrants in the class, rounded up to the nearest tenth of a point.

14. TIME LIMIT

- 14.1 The time limit for any particular race will be four hours for Jib and Main, Cruising and Native Boats (Nativas). Boats failing to finish within one hour after the first boat in her class finishes or within the time limit, whichever is first, will be scored Did Not Finish. This changes RRS 35 and RRS A4 and A5.
- 14.2 For all ONE DESIGN Classes, Racing A and B.
 - 14.2.1 When racing to OS1 the Time Limit is one (1) hour after the first of their class sails the course and finishes. Boats failing to finish within that hour will be scored Did Not Finish without a hearing. This changes rule 35. A4 and A5.

14.2.2 Except when racing to OS1 boats failing to finish within the Time Limit after the first boat of their class sails the course and finishes will be scored Did Not Finish without a hearing. This changes rule 35, A4 and A5.

14.2.3 Time limits in minutes for the entire series are as follows:

Class	Time Limits
IC 24 / J 24	10
Racing A / B	20

15. PROTESTS AND REQUEST FOR REDRESS

- 15.1 Protest forms will be available at the Regatta offices at THE YACHT CLUB AT PALMAS DEL MAR main building premises.
- 15.2 In addition to the requirements of RRS 61, protesting yachts shall inform the Race Committee Signals Vessel of their intention to file a protest, as soon as reasonably possible after she finishes the race. This changes RRS 61.
- 15.3 The protest time limit is 60 minutes after the last boat of her class has finished the last race of the day.
- 15.4 Protests will be posted within 20 minutes after the protest time limit to inform competitors of hearings in which they are parties or named as witnesses.
- 15.5 Protests will be heard in the order posted, beginning as soon as practical.
- 15.6 Decisions of the International Jury will be final as provided in RRS 70.5.
- 15.7 On the last day of the regatta a request for reopening a hearing shall be delivered within the protest time limit if the party requesting reopening was informed of the decision on the previous day or no later than 30 minutes after the party requesting reopening was informed of the decision on that day. This changes RRS 66.
- 15.8 Other than as allowed in CSA rating rule A.2.3.2 no measurement or rating protest may be lodged after the first day of racing. This request shall be in writing. This changes RRS 60.1(a).

16. SCORING

- 16.1 A minimum of three (3) races must be completed to constitute a regatta.
 - 16.1.1 When 4 races have been completed, a boat's series score will be the total of her race scores.
 - 16.1.2 In the event that between 5 races and 10 races have been completed, a boat's series score will be the total of her race scores excluding her worst score.
 - 16.1.3 In the event that more than 10 races have been completed, a boat's series score will be the total of her race scores excluding her two worst scores.

17. RADIO COMMUNICATION

- 17.1 All competing boats shall carry a VHF radio capable of receiving communications from the Race Committee on channel 9.
- 17.2 The Race Committee Signals Vessel will endeavor to announce a time check 30 minutes before the first warning signal of the first race on each day.

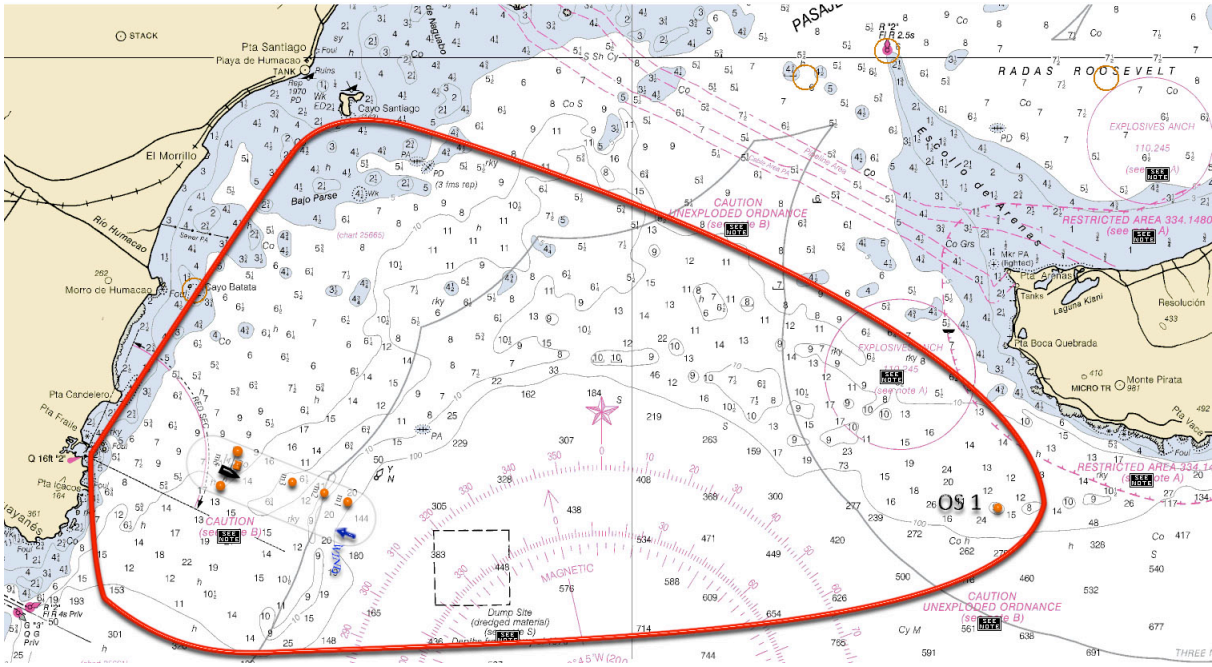
18. PRIZES

- 18.1 Class trophies will be awarded to the first 3 places in each class.

19. DISCLAIMER OF LIABILITY

- 19.1 Competitors agree to be bound by the International Sailing Federation Racing Rules of Sailing (RRS), by the Sailing Instructions and the Notice of Race. Competitors agree to take any and all responsibility for the nautical qualities of their vessels, the rigging, the crew's ability and the safety equipment. Competitors also agree to take any and all responsibility for damages caused to third persons (bodily injury included but not limited thereto) or their belongings, to themselves (bodily injury included but not limited thereto) or to their belongings, ashore and at sea as a consequence of their participation in the regatta, relieving of any responsibility The Federación de Vela de Puerto Rico Organization and all persons involved in the organization under whatever qualification. Competitors are to be acquainted with ISAF RRS Part 1 Fundamental Rule 4: "The responsibility for a boat's decision to participate in a race or to continue racing is hers alone". In any case, competitors agree that The Federación de Vela de Puerto Rico Organization, the sponsors and their agents, have no responsibility for loss of life or injury to members or others or for the loss of, or damage to any vessel or property. As part of the registration process, each individual participating crewmember will be required to sign a declaration accepting this disclaimer of liability.

Attachment 1: Racing Area



Attachment 2: Courses (1 through 9)

Course	Route
Course 1	Start – M2 – Finish
Course 2	Start – M1 – Finish
Course 3	Start – M2 – G – M2 – Finish
Course 4	Start – M1 – G – M1 – Finish
Course 5	Start – M2 – G – M2 – G – M2 – Finish
Course 6	Start – M1 – G – M1 – G – M1 – Finish
Course 7	Start – M3 – Finish
Course 8	Start – M3 – G – M3 – Finish
Course 9	Start – M3 – G – M3 – G – M3 – Finish

●
M1

●
M2

●
M3

● **G** ●
S P



Attachment 2: Courses (10)

Course	Route
Course 10	Start – M1 – OS1 – G – Finish

